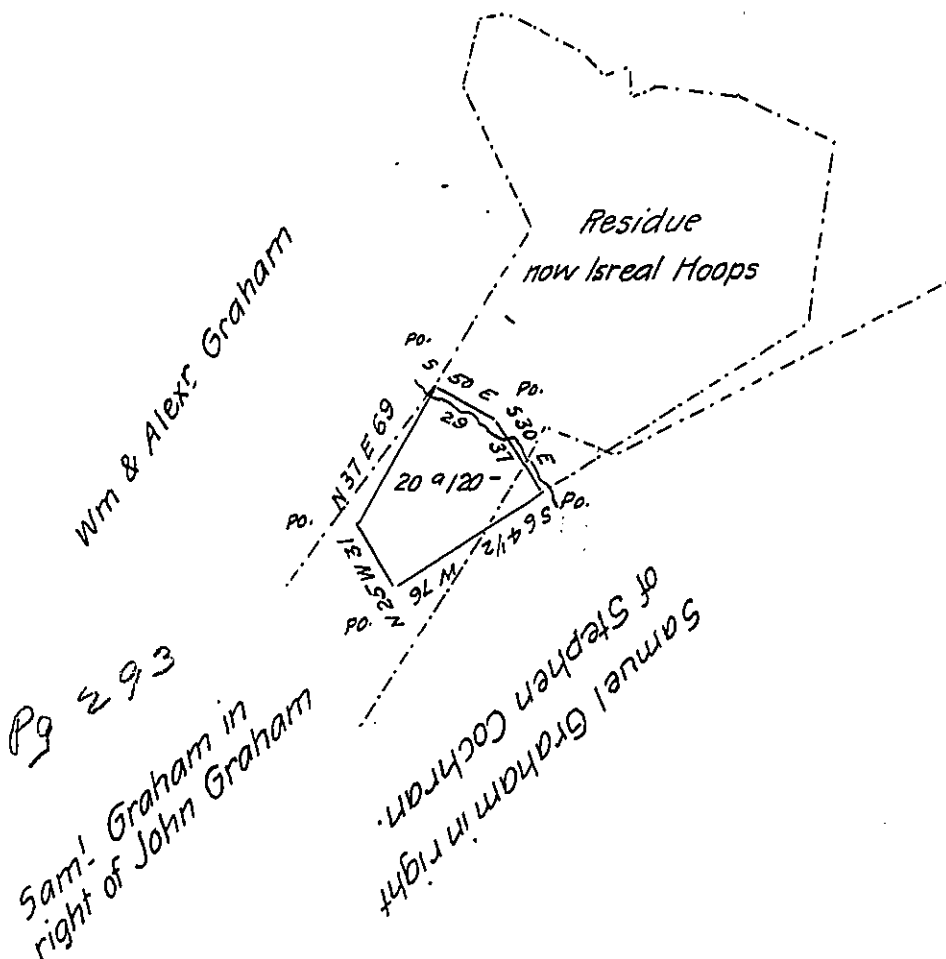


The dotted line interfering with this draught shews the line of John Graham and Stephen Cochran.



Draught of twenty acres and 120 perches and allow^{ce}. Situated in Turbett Township, Mifflin County (late Lack Township, Cumb^d County) part of a tract said to contain 144^a 69 prs. appears to have been surveyed 31-May 1805 by virtue of a warrant to John Fitzgerald dated 11-Jan^y 1765 as appears by official paper remaining in my office, resurveyed and divided at the instance of sam^l. Graham 7th Oct^r 1819

Wm M. Alister D.S.

Note, the above represented part of a tract was originally contained in a survey on wt^t to John Graham dated 1st March 1763. To Samuel Cochran Esquire Surveyor Gen^l of Pennsylvania

IN TESTIMONY that the above is a copy of the original remaining on file in the Department of Internal Affairs of Pennsylvania, made conformably to an Act of Assembly approved the 16th day of February, 1833, I have hereunto set my Hand and caused the Seal of said Department to be affixed at Harrisburg, this seventeenth day of December 1904

Loac J. Brown
Secretary of Internal Affairs.